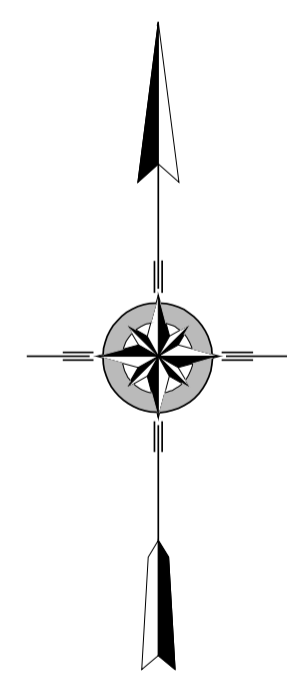
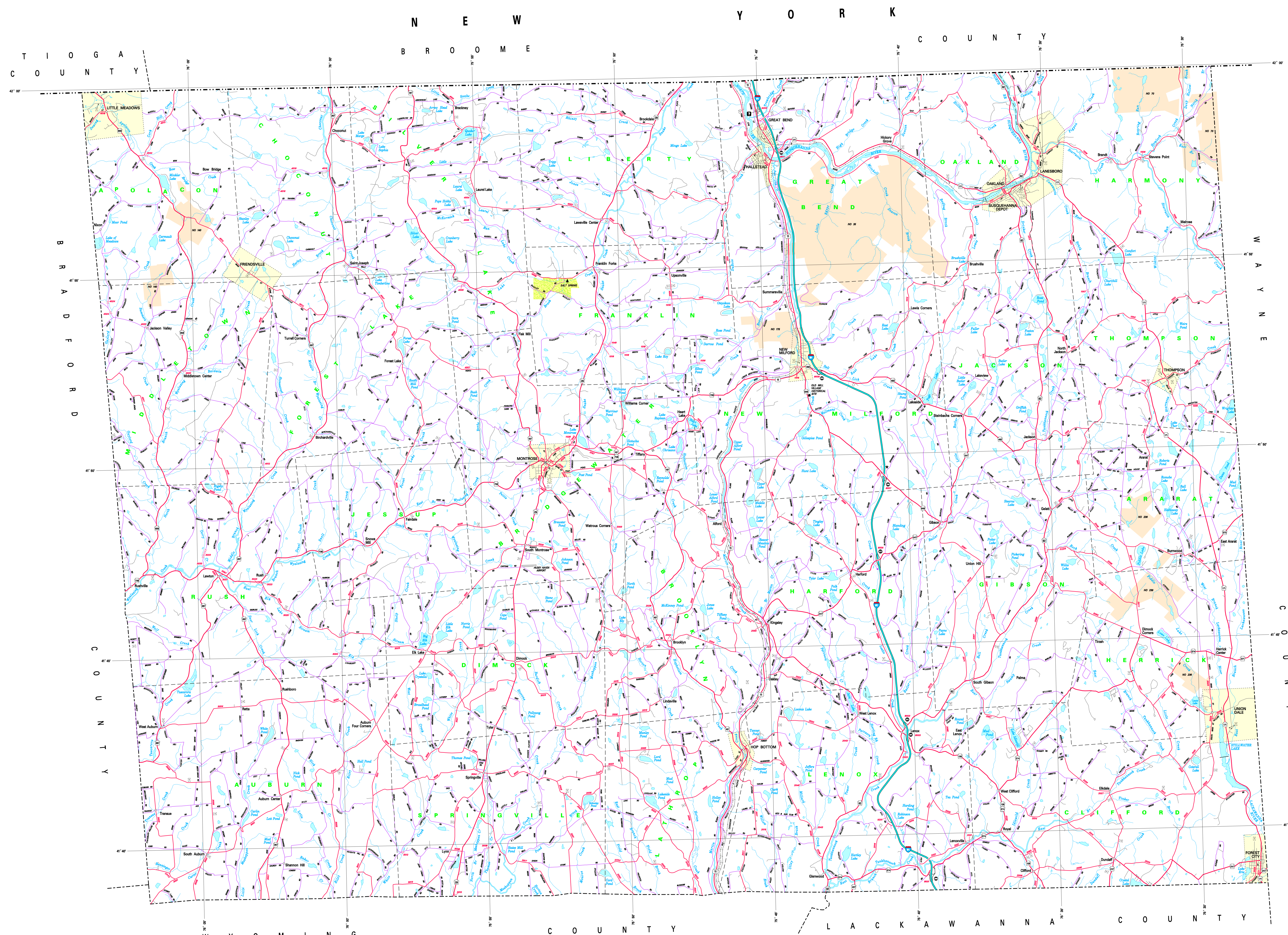
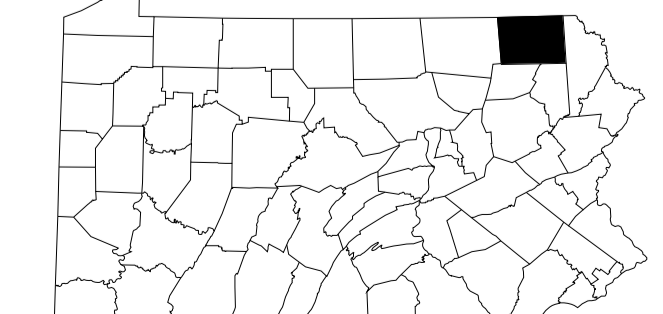
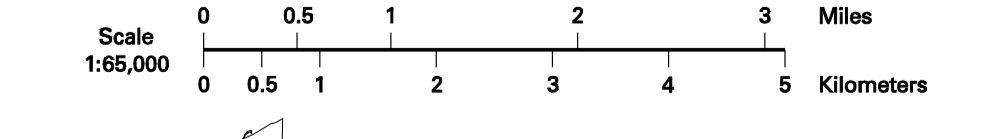


- FULLY CONTROLLED ACCESS HIGHWAY
- MULTILANE HIGHWAY
- TRAFFIC ROUTE
- TRANSVERSE STATE ROAD AND ROUTE
- STATE MAINTAINED BRIDGE
- TOWNSHIP ROAD
- TOWNSHIP ROAD (PENDING IMPROVEMENT)
- OTHER ROAD
- INTERSTATE INTERCHANGE NUMBER
- INTERSTATE TRAFFIC ROUTE
- UNIMproved STATE TRAFFIC ROUTE
- PENNSYLVANIA TRAFFIC ROUTE
- MARKED OR UNMARKED
- MARKED OR UNMARKED (TRACK REMAINS)
- STATE LINE
- COUNTY LINE
- TOWNSHIP LINE
- INCORPORATED CITY
- INCORPORATED BOROUGH
- STATE CAPITAL
- COUNTY SEAT
- OTHER COMMUNITY
- COLLEGE OR UNIVERSITY
- STATE POLICE FACILITY
- COURTNEY
- STATE ADMINISTERED HISTORIC PROPERTY
- FEDERAL GOVERNMENT HISTORIC
- PUBLIC FACILITY
- PORTS OF ENTRY
- HOME RACK TRACK
- HELIPORT
- REF AREA AND CENTER FACILITY
- WELCOME CENTER AND COMFORT FACILITY
- STATE FISH HATCHERY
- STATE FOREST BUCKLE AREA
- STATE FOREST ROAD AREA
- FEDERAL RECREATION SITE
- STATE PARK LAND / HEADQUARTERS
- STATE GAME LAND AND NUMBER
- STATE AND FEDERAL FOREST LAND
- FEDERAL PARK / RECREATION LAND
- FEDERAL RESERVATION



2009  
GENERAL HIGHWAY MAP  
**SUSQUEHANNA COUNTY**  
PENNSYLVANIA

PREPARED BY THE  
PENNSYLVANIA DEPARTMENT OF TRANSPORTATION  
BUREAU OF PLANNING AND RESEARCH  
GEOGRAPHIC INFORMATION DIVISION  
IN COOPERATION WITH THE  
U.S. DEPARTMENT OF TRANSPORTATION  
FEDERAL HIGHWAY ADMINISTRATION



POPULATION OF COUNTY (2000 Census) 42,288  
AREA OF COUNTY (SQ. MILES) 2,176  
POLYCONIC PROJECTION - NAD 83 DATUM

COPIES OF THIS MAP ARE AVAILABLE AT NOMINAL COST  
CONTACT:  
PENNSYLVANIA DEPARTMENT OF TRANSPORTATION  
SALES STORE  
HARRISBURG, PENNSYLVANIA 17105 - 2028  
TELEPHONE (717) 787-6746  
USERS NOTING ERRORS OR OMISSIONS ON THIS MAP  
ARE REQUESTED TO REPORT THEM TO:  
PENNSYLVANIA DEPARTMENT OF TRANSPORTATION  
BUREAU OF PLANNING AND RESEARCH  
GEOGRAPHIC INFORMATION DIVISION  
P.O. BOX 3025  
HARRISBURG, PENNSYLVANIA 17105 - 3025  
E-MAIL: [pa-geom@dot.state.pa.us](mailto:pa-geom@dot.state.pa.us)  
COPYRIGHT © COMMONWEALTH OF PENNSYLVANIA  
ALL RIGHTS RESERVED

Printed on Recycled Paper